



57m Truck Mount

MACHINE SPECIFICATION SHEET

TM57

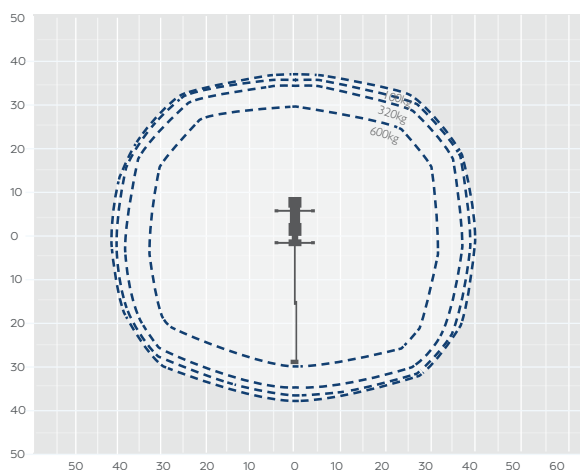
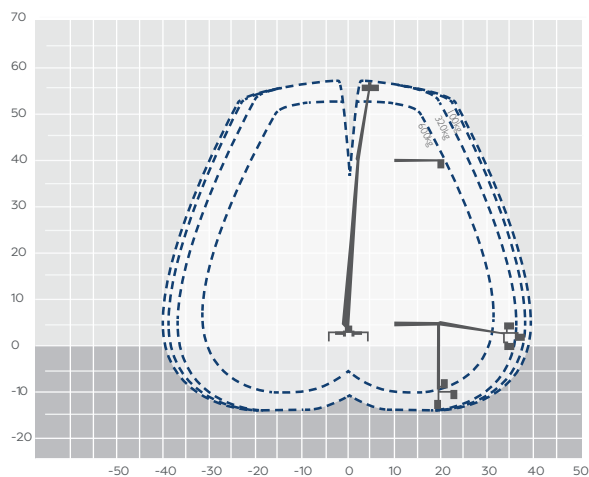
REACH HEIGHT	57.00m
PLATFORM HEIGHT	55.00m
CLOSED LENGTH	11.90m
CLOSED HEIGHT	3.90m
CLOSED WIDTH	2.51m
HORIZONTAL REACH	41.00m
WIDTH MAX WORKING	12.50m
WIDTH MIN WORKING*	2.50m Variable
SAFE WORKING LOAD	600kg
WEIGHT	26,000kg
CAGE DIMENSIONS	3.81x1.04x1.10m
CAGE ROTATION	400°
IPAF CATEGORY	1b operated only
SLEW	540°

FEATURED MODEL **Palfinger P570**

WILSON ACCESS HIRE

The Palfinger P570 is the flagship truck mounted cherry picker in the Wilson Access hire fleet. Offering exceptional reach heights of 57m and an impressive 41m outreach, this machine suits customers looking for maximum working height and maximum horizontal outreach. The new x-jib feature enables the platform to go up and over building working at a negative outreach. Other key features include an extending telescopic basket, automatic support levelling and permanently fitted glazing forks. The Palfinger 570 offers incredible flexibility, making this the ideal access platform for even the most difficult to reach projects. Available for hire with one of our highly trained and experienced operators.

The information provided is for guidance only. It may change at any time in accordance with manufacturer's specification. Variable jacking will affect the working envelope. Outreach is variable depending on load, angle of rotation and outrigger configuration.



Side profile

