



# 51m Truck Mount

## MACHINE SPECIFICATION SHEET

### TM51

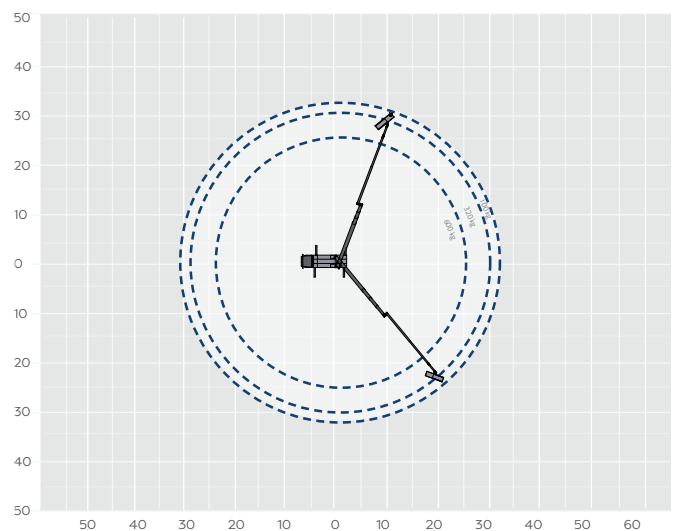
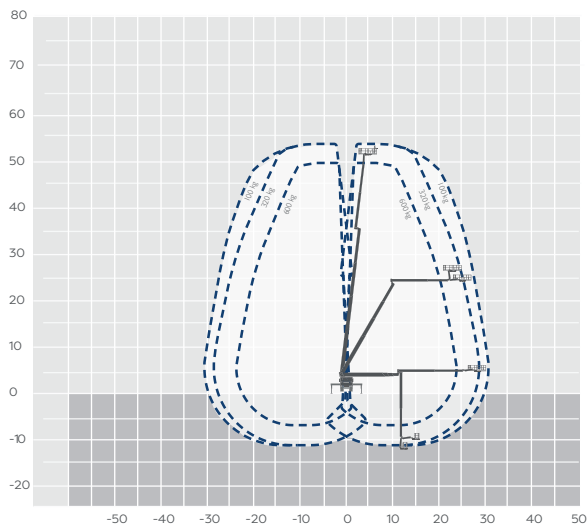
REACH HEIGHT	51.00m
PLATFORM HEIGHT	49.00m
CLOSED LENGTH	10.40m
CLOSED HEIGHT	3.75m
CLOSED WIDTH	2.51m
HORIZONTAL REACH	33.00m
WIDTH MAX WORKING	8.89m
WIDTH MIN WORKING*	2.51m
SAFE WORKING LOAD	600kg
WEIGHT	26,000kg
CAGE DIMENSIONS	2.42x0.97m
CAGE ROTATION	500°
IPAF CATEGORY	1b
SLEW	540°

FEATURED MODEL **Ruthmann T510 HF**

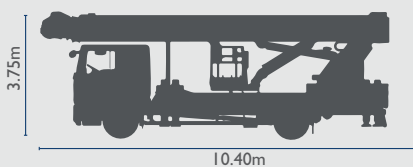
## WILSON ACCESS HIRE

The Ruthmann T510 HF is featuring a revolutionary, world-class performance specifications of 51m working height and 33m outreach. Such performance was previously possible only on a 3-axle chassis. The T510 HF also has the option of working below ground level.

The information provided is for guidance only. It may change at any time in accordance with manufacturer's specification. Variable jacking will affect the working envelope. Outreach is variable depending on load, angle of rotation and outrigger configuration.



### Side profile



CLOSED UNIT