



# 48m Truck Mount

## MACHINE SPECIFICATION SHEET

### TM48

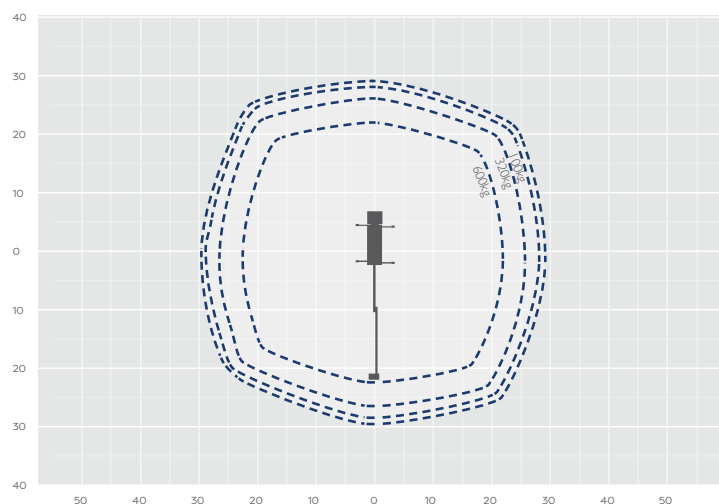
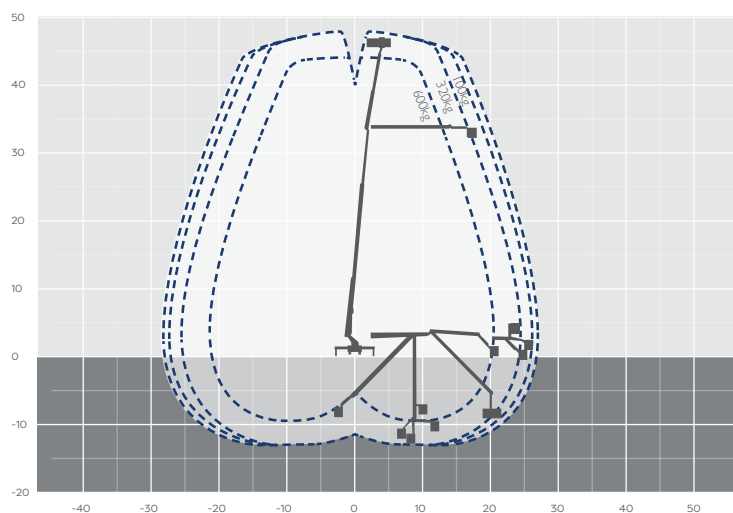
REACH HEIGHT	48.00m
PLATFORM HEIGHT	46.00m
CLOSED LENGTH	9.90m
CLOSED HEIGHT	3.93m
CLOSED WIDTH	2.50m
HORIZONTAL REACH	28.00m
WIDTH MAX WORKING	6.30m
WIDTH MIN WORKING	2.50m Variable
SAFE WORKING LOAD	600kg
WEIGHT	18,000kg
CAGE DIMENSIONS	3.88x1.05x1.10m
CAGE ROTATION	400°
IPAF CATEGORY	1b operated
SLEW	540°

FEATURED MODEL **PALFINGER P480**

## WILSON ACCESS HIRE

The Palfinger P480 truck mounted cherry picker has a working height of 48m and horizontal outreach of 28m. A 240° x-jib allows a larger working range and a 2 x 200° basket rotation ensures perfect positioning. Other features of the Palfinger P480 include a fully variable stabiliser system and the ability to work at a negative outreach. This truck mounted cherry picker is suitable for many applications including bridge and dock inspections, media and tv, signage and facilities management working at height jobs. This machine is supplied with an experienced and fully qualified operator.

The information provided is for guidance only. It may change at any time in accordance with manufacturer's specification. Variable jacking will affect the working envelope. Outreach is variable depending on load, angle of rotation and outrigger configuration.



Side  
profile

