



45m Truck Mount

MACHINE SPECIFICATION SHEET

TM45

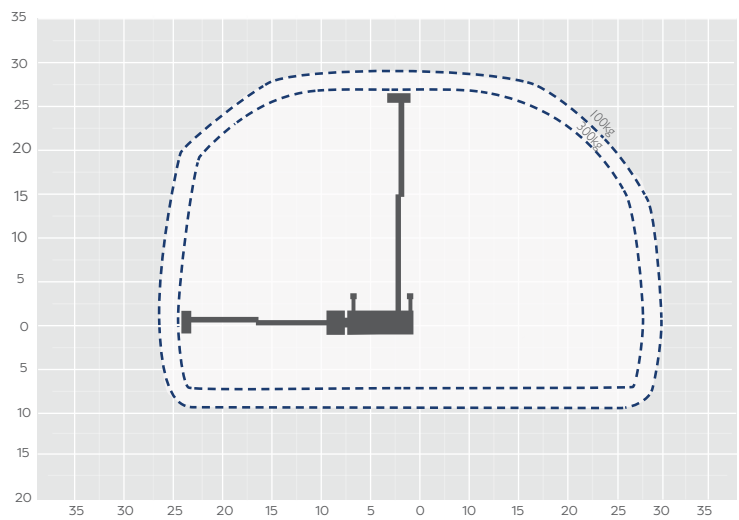
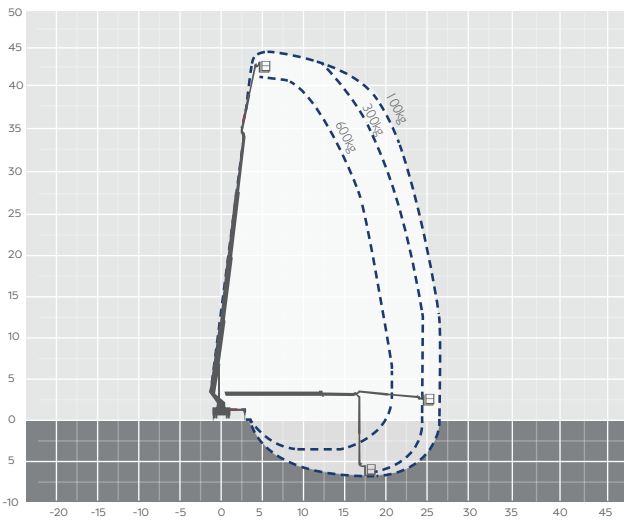
REACH HEIGHT	45.00m
PLATFORM HEIGHT	43.00m
CLOSED LENGTH	10.00m
CLOSED HEIGHT	3.80m
CLOSED WIDTH	2.50m
HORIZONTAL REACH	28.70m
WIDTH MAX WORKING	6.20m
WIDTH MIN WORKING	2.50m Variable
SAFE WORKING LOAD	600kg
WEIGHT	18,000kg
CAGE DIMENSIONS	3.88x1.05x1.10m
CAGE ROTATION	160°
IPAF CATEGORY	1b operated
SLEW	540°

FEATURED MODEL	WUMAG WT450
----------------	-------------



A high specification truck mounted cherry picker with a 45.00m reach height and telescopic jib, the Wumag WT450 offers fantastic versatility. The jib platform allows for working at a negative outreach, making the Wumag WT450 the ideal truck mounted platform for bridge and dock inspection working at height jobs. This machine is supplied with an experienced and fully qualified operator.

The information provided is for guidance only. It may change at any time in accordance with manufacturer's specification. Variable jacking will affect the working envelope. Outreach is variable depending on load, angle of rotation and outrigger configuration.



Side profile

