



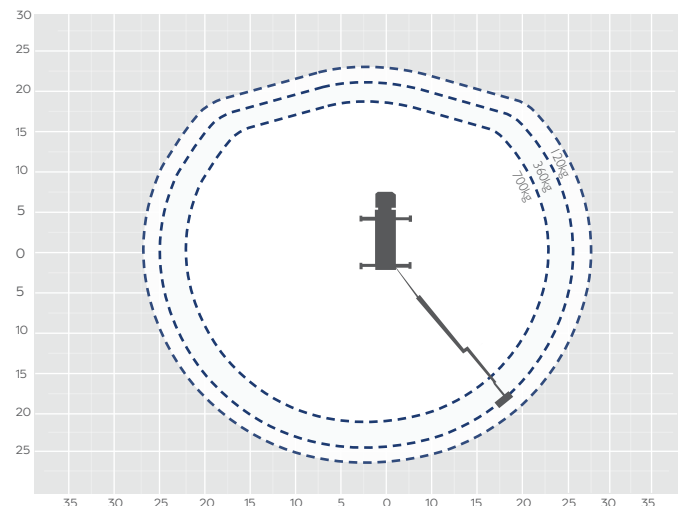
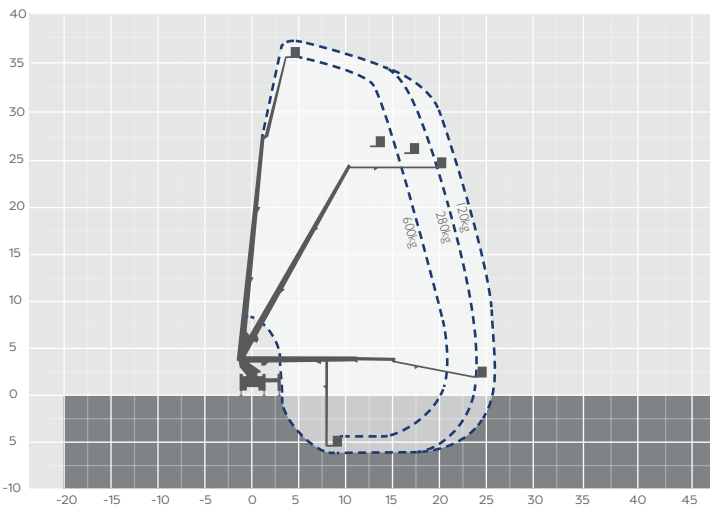
38m Truck Mount

MACHINE SPECIFICATION SHEET

TM38

REACH HEIGHT	38.00m
PLATFORM HEIGHT	36.00m
CLOSED LENGTH	10.00m
CLOSED HEIGHT	3.70m
CLOSED WIDTH	2.50m
HORIZONTAL REACH	26.00m
WIDTH MAX WORKING	6.50m
WIDTH MIN WORKING	2.50m
SAFE WORKING LOAD	600kg
WEIGHT	18,000kg
CAGE DIMENSIONS	3.70x1.10x1.10m
CAGE ROTATION	180°
IPAF CATEGORY	1b operated
SLEW	560°

FEATURED MODEL **BRONTO SKYLIFT S38 XDT**



The Bronto Skylift S38 XDT is a jumbo class truck mounted cherry picker on a lightweight chassis. With a maximum working height of 38m, a horizontal outreach of 26m and a 600kg safe working load. The telescopic cage boom provides more up-and-over and below-ground reach and has excellent height to weight ratio. Available for hire with one of our highly trained and experienced operators.

The information provided is for guidance only. It may change at any time in accordance with manufacturer's specification. Variable jacking will affect the working envelope. Outreach is variable depending on load, angle of rotation and outrigger configuration.

Side profile

