



35m Truck Mount

MACHINE SPECIFICATION SHEET

TM35B

REACH HEIGHT	35.00m
PLATFORM HEIGHT	33.00m
CLOSED LENGTH	9.50m
CLOSED HEIGHT	3.70m
CLOSED WIDTH	2.51m
HORIZONTAL REACH	29.60m
WIDTH MAX WORKING	6.25m
WIDTH MIN WORKING*	2.55m Variable
SAFE WORKING LOAD	500kg
WEIGHT	18,000kg
CAGE DIMENSIONS	2.40m x 1.00m x 1.10m
CAGE ROTATION	180°
IPAF CATEGORY	1b operated only
SLEW	560°

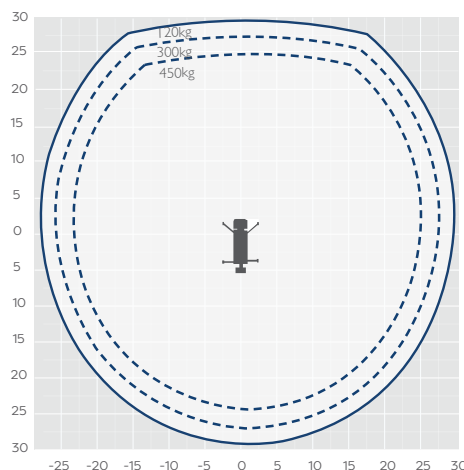
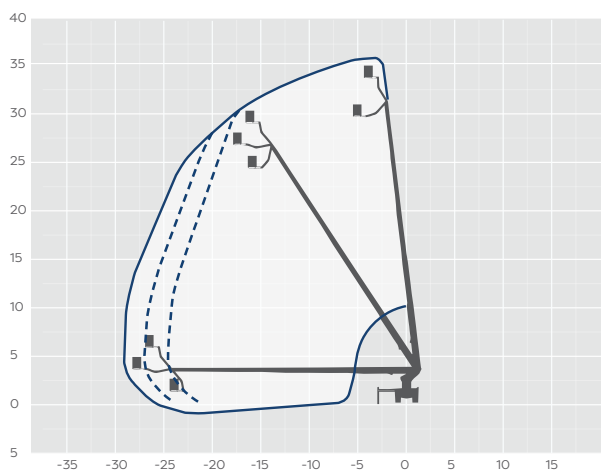
FEATURED MODEL **Bronto S35EM**

WILSON ACCESS HIRE

With its compact size the Bronto S35EM access platform is ideal for use when you need to work at height in city centres. With a cage capacity of 500kg this is the ideal for use in Telecom network installation, maintenance and upgrades.

Mounted on a compact 18,000kg Volvo chassis this truck mounted MEWP has a transportation length of just 9.50m making it ideal for space restricted work sites. This cherry picker can also utilise variable jacking which can be useful on sites with limited set up space.

The information provided is for guidance only. It may change at any time in accordance with manufacturer's specification. Variable jacking will affect the working envelope. Outreach is variable depending on load, angle of rotation and outrigger configuration.



Side
profile

