



30m Truck Mount

MACHINE SPECIFICATION SHEET

TM30

REACH HEIGHT	30.00m
PLATFORM HEIGHT	28.00m
CLOSED LENGTH	9.07m
CLOSED HEIGHT	3.50m
CLOSED WIDTH	2.52m
HORIZONTAL REACH	20.90m
WIDTH MAX WORKING	5.00m
WIDTH MIN WORKING*	2.52m
SAFE WORKING LOAD	350kg
WEIGHT	7,490kg
CAGE DIMENSIONS	1.80x0.80x1.10m
CAGE ROTATION	170°
IPAF CATEGORY	1b
SLEW	540°

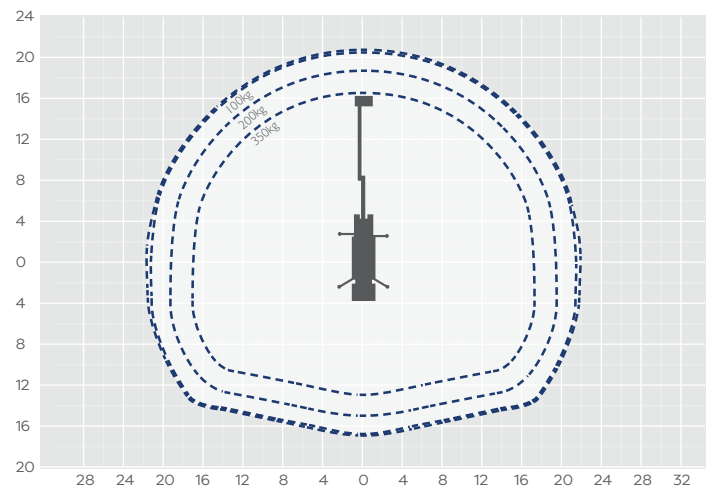
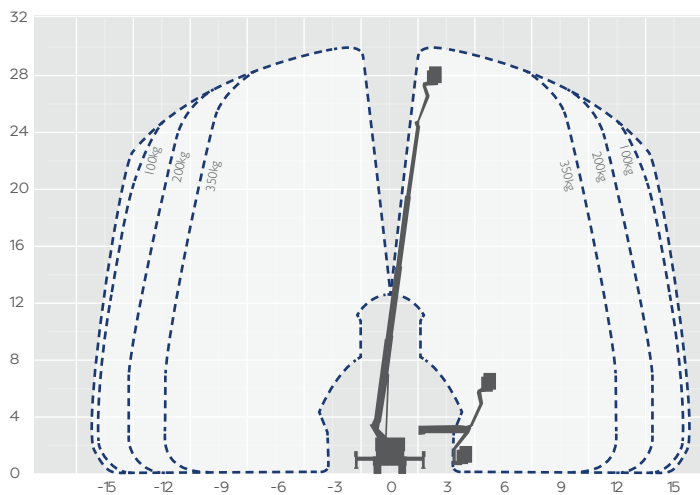
FEATURED MODEL	Palfinger P300
----------------	----------------

WILSON

ACCESS HIRE

The Palfinger P300 has an operating height of 30.00m and an outreach of 20.90m, and this truck mounted cherry picker for hire makes working at height safe and easy. This powered access platform proves to be a popular choice for high level cleaning and facilities management jobs. This machine is supplied with an experienced and fully qualified operator.

The information provided is for guidance only. It may change at any time in accordance with manufacturer's specification. Variable jacking will affect the working envelope. Outreach is variable depending on load, angle of rotation and outrigger configuration.



Side profile

