



# 26m Truck Mount

## MACHINE SPECIFICATION SHEET

### TM26R

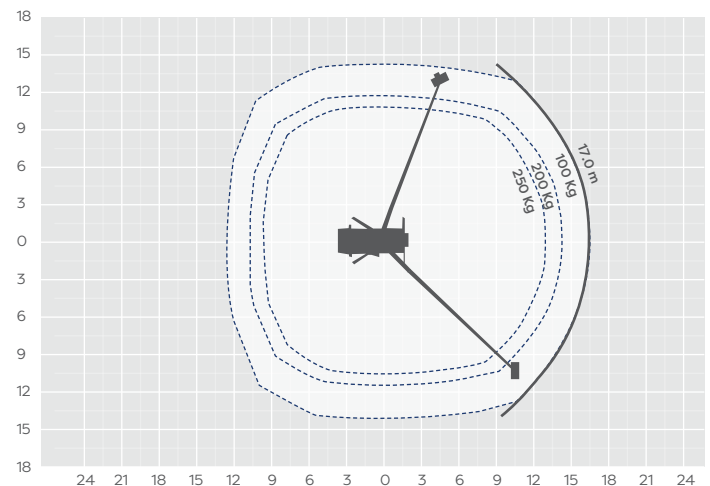
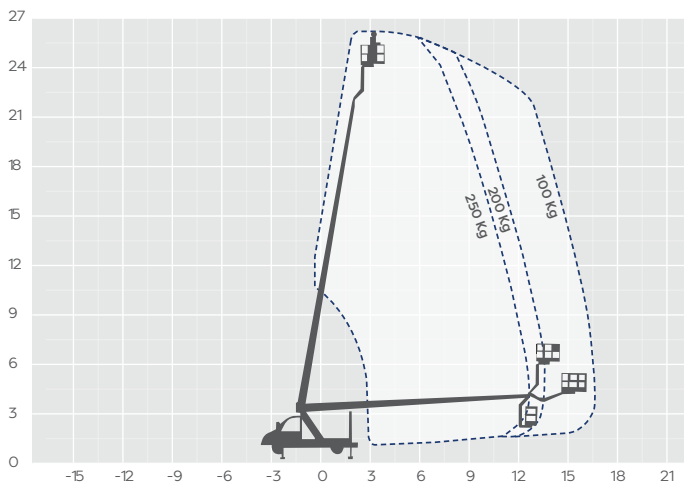
REACH HEIGHT	26.00m
PLATFORM HEIGHT	24.00m
CLOSED LENGTH	7.90m
CLOSED HEIGHT	3.00m
CLOSED WIDTH	2.20m
HORIZONTAL REACH	17.00m
WIDTH MAX WORKING	3.60m
WIDTH MIN WORKING*	2.20m
SAFE WORKING LOAD	250kg
WEIGHT	3,500kg
CAGE DIMENSIONS	1.40x0.70m
CAGE ROTATION	185°
IPAF CATEGORY	1b
SLEW	360°

FEATURED MODEL RUTHMANN STEIGER TBR 260

## WILSON ACCESS HIRE

The Ruthmann Steiger TBR 260 is a truck-mounted telescopic boom with a working height of up to 26 meters and has 17m reach capacity. It can be used for various applications such as maintenance, construction, and renovation work.

The information provided is for guidance only. It may change at any time in accordance with manufacturer's specification. Variable jacking will affect the working envelope. Outreach is variable depending on load, angle of rotation and outrigger configuration.



### Side profile

