



21m Truck Mount

MACHINE SPECIFICATION SHEET

TM21

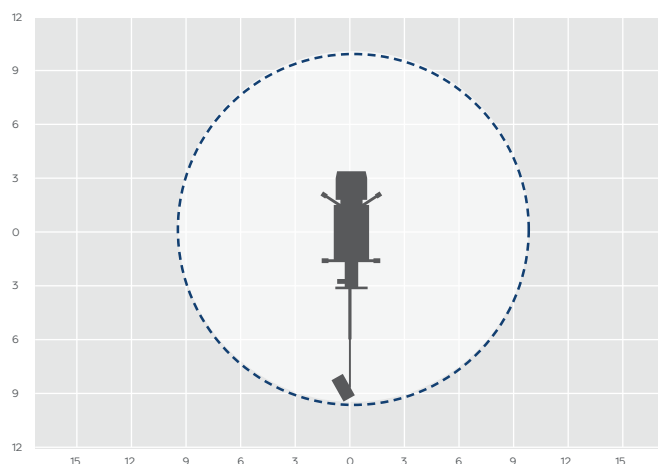
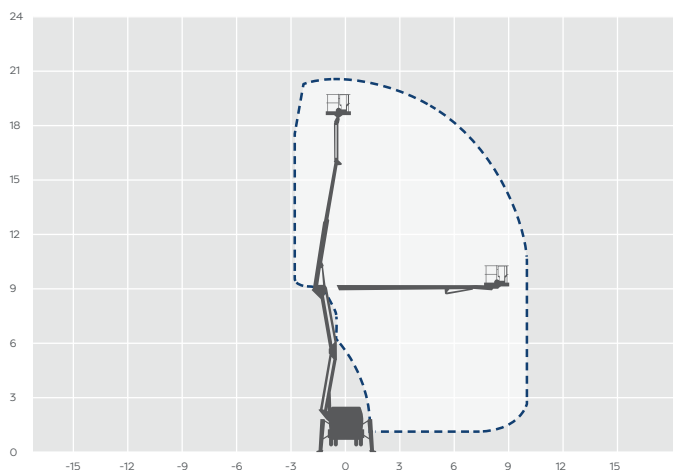
REACH HEIGHT	20.80m
PLATFORM HEIGHT	18.80m
CLOSED LENGTH	6.82m
CLOSED HEIGHT	2.85m
CLOSED WIDTH	2.10m
HORIZONTAL REACH	10.00m
WIDTH MAX WORKING	3.02m
WIDTH MIN WORKING*	2.87m
SAFE WORKING LOAD	200kg
WEIGHT	3,500kg
CAGE DIMENSIONS	1.40x0.70x1.10m
CAGE ROTATION	130°
IPAF CATEGORY	1b
SLEW	360°

FEATURED MODEL CTE ZED 21J

WILSON ACCESS HIRE

The CTE ZED 21J has a working height of 20.80m and a horizontal outreach of 10.00m. Available to hire today as a self-drive option* or can be supplied with an experienced and fully qualified operator. A popular machine with local authorities and highway maintenance.

The information provided is for guidance only. It may change at any time in accordance with manufacturer's specification. Variable jacking will affect the working envelope. Outreach is variable depending on load, angle of rotation and outrigger configuration.



Side
profile

