

33m Hybrid Spider Lift

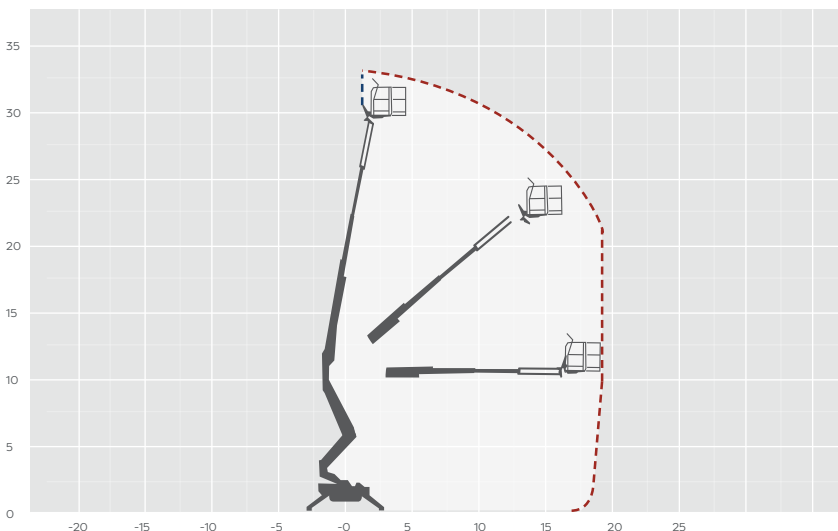
MACHINE SPECIFICATION SHEET

TR33H

REACH HEIGHT	33.00m
PLATFORM HEIGHT	31.00m
CLOSED LENGTH	7.30m
CLOSED HEIGHT	1.99m
CLOSED WIDTH	1.25m
HORIZONTAL REACH	19.00m**
WIDTH MAX WORKING	5.50m
WIDTH MIN WORKING	3.70m
SAFE WORKING LOAD	200kg
WEIGHT	6,200kg
CAGE DIMENSIONS	1.40mx0.80x1.10m
GRADEABILITY	37% (20°)
CAGE ROTATION	+/-90°
IPAF CATEGORY	1b
SLEW	375°
UP AND OVER CLEARANCE	11.00m
MINIMUM SETUP AREA	3.70mx7.40m (WxL)
TRACK SURFACE AREA	1.92mx0.25m
DRIVE SPEED	4.0km/h
MAXIMUM SETUP INCLINE	30.0% (16.7°)
NO. OUTRIGGER POSITIONS	3
POWER	HYBRID

FLOOR LOADINGS

MAX. LOAD PER OUTRIGGER	2,753kg
MAX. LOAD PER SURFACE PRESSURE	0.85kg/m2 (Soft surface) 3.10kg/m2 (Hard surface)
MAX. GROUND PRESSURE WITH STANDARD OUTRIGGER PADS	3.70kg/cm ²
FEATURED MODEL	FALCON FS330Z Hybrid



The Falcon Spider Atrium Crawler Lift FS330Z Hybrid has a two-arm over-centre riser, four section telescopic aluminium boom, and 110° articulating jib which together offers the user a superior working envelope. Working height is 33 metres making it the highest articulated Z-boom on the market, with an outreach of 19 metres at an up and over height of 11 metres. The crawler undercarriage with variable width from 1.1 metres to 1.5 metres, and offers impressive speed.

The information provided is for guidance only. It may change at any time in accordance with manufacturer's specification. Variable jacking will envelope. Outreach is variable depending on load, angle of rotation and outrigger configuration.

*Narrow, standard, left side, right side.

**With 100kg in the basket

