

# 31m Diesel/Mains Spider Lift

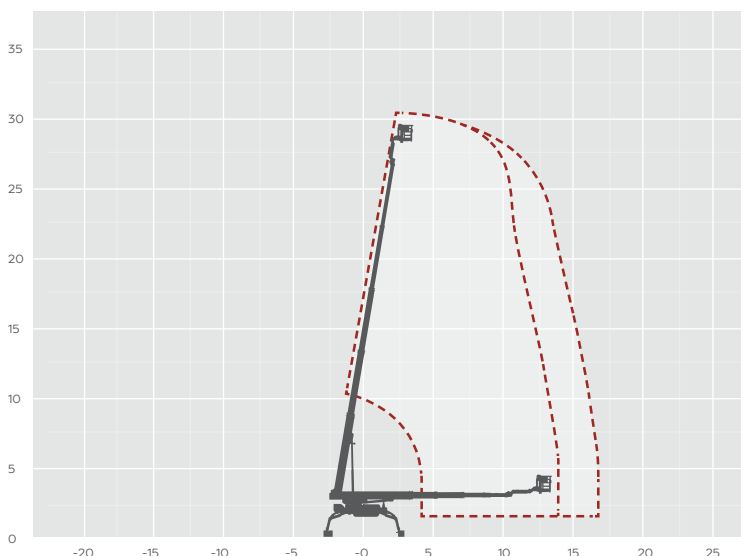
## MACHINE SPECIFICATION SHEET

### TR31T

REACH HEIGHT	31.00m
PLATFORM HEIGHT	29.0m
CLOSED LENGTH	7.30m
CLOSED HEIGHT	1.98m
CLOSED WIDTH	1.58m
HORIZONTAL REACH	17.70m**
WIDTH MAX WORKING	5.15m
WIDTH MIN WORKING	2.75m
SAFE WORKING LOAD	250kg
WEIGHT	4,300kg
CAGE DIMENSIONS	1.42x0.70x1.10m
GRADEABILITY	30% (16.7°)
CAGE ROTATION	180°
IPAF CATEGORY	1b
SLEW	450°
UP AND OVER CLEARANCE	N/A
MINIMUM SETUP AREA	2.75x7.23m (WxL)
TRACK SURFACE AREA	1.92mx0.25m
DRIVE SPEED	4.0km/h
MAXIMUM SETUP INCLINE	30.0% (16.7°)
NO. OUTRIGGER POSITIONS	Multi 4*
POWER	DIESEL/MAINS

#### FLOOR LOADINGS

MAX. LOAD PER OUTRIGGER	3.10 kg/cm2
MAX. LOAD PER SURFACE PRESSURE	3.9kN/m <sup>2</sup>
MAX. GROUND PRESSURE WITH STANDARD OUTRIGGER PADS	32,00kN
FEATURED MODEL	TEUPEN LEO 31T



The Teupen Leo 31T is the largest spider lift in the Wilson Access hire fleet with an extensive working height of 31m and a 17.70m unrestricted outreach. Ideally transported on a light trailer with a small van. The track drive with non-marking rubber tracks provides easy, precise maneuvering and to protect sensitive flooring. The Leo 31 spider lift has an outstanding specification including a tree surgery package, a lighting package, white non-marking rubber tracks and is radio remote control providing precise manoeuvring. Available to hire either as a self-drive option, or with one of our experienced operators.

The information provided is for guidance only. It may change at any time in accordance with manufacturer's specification. Variable jacking will envelope. Outreach is variable depending on load, angle of rotation and outrigger configuration.

\*Narrow, standard, left side, right side.

\*\*With 80kg in the basket

