



26m Diesel/Electric Spider Lift

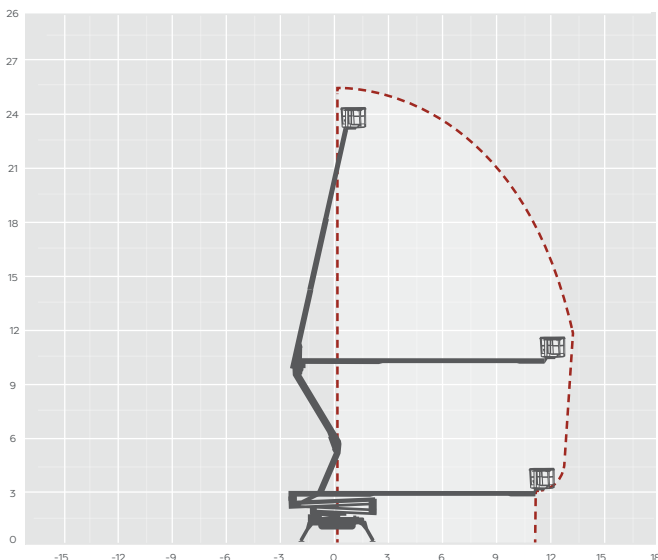
MACHINE SPECIFICATION SHEET

TR26

REACH HEIGHT	25.70m
PLATFORM HEIGHT	23.70m
CLOSED LENGTH	6.34m
CLOSED HEIGHT	1.98m
CLOSED WIDTH	0.99m
HORIZONTAL REACH	13.60m
WIDTH MAX WORKING	3.97m
WIDTH MIN WORKING	2.50m
SAFE WORKING LOAD	230kg
WEIGHT	4,365kg
CAGE DIMENSIONS	1.33x0.69x1.10m
GRADEABILITY	28.7% (16°)
CAGE ROTATION	124° (+/-62°)
IPAF CATEGORY	1b
SLEW	360°
UP AND OVER CLEARANCE	10m
MINIMUM SETUP AREA	2.50x6.34m (WxL)
TRACK SURFACE AREA	N/A
DRIVE SPEED	1.1 - 2km/h
MAXIMUM SETUP INCLINE	28.7% (16°)
NO. OUTRIGGER POSITIONS	Multi 4*
POWER	DIESEL/ELECTRIC

FLOOR LOADINGS

MAX. LOAD PER OUTRIGGER	3124daN - 4.42daN/cm ²
MAX. LOAD PER SURFACE PRESSURE	0.53daN/cm ²
MAX. GROUND PRESSURE WITH STANDARD OUTRIGGER PADS	3124daN - 4.42daN/cm ²
FEATURED MODEL	HINOWA LIGHTLIFT 26.14



The Hinowa Lightlift 26 spider lift for hire has a working height of 25.70m and a 13.60m outreach, offering excellent performance in a compact machine. Maximum safety and stability, in addition to fluid movement and precision due to the performance hydraulic system. Easy manoeuvring of this spider lift due to the compact size (less than 2 metres tall when in transit mode) and automatically slows down or stops in critical conditions thanks to the tilt control. Excellent vertical trajectory thanks to the scissor system which allows close wall work with extreme simplicity and precision. Can be used indoors due to the low noise and pollution-free levels of the electric motor version making it suitable for shopping centres. Available to hire either as a self-drive option, or with one of our experienced operators.

The information provided is for guidance only. It may change at any time in accordance with manufacturer's specification. Variable jacking will envelope. Outreach is variable depending on load, angle of rotation and outrigger configuration.

*Narrow, standard, left side, right side.

