



# 20m Electric Spider Lift

## MACHINE SPECIFICATION SHEET

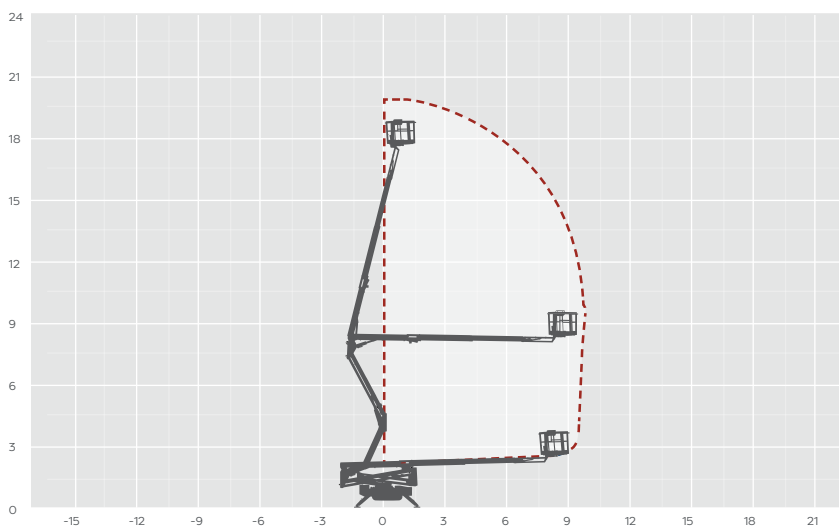
### TR20L

REACH HEIGHT	20.15m
PLATFORM HEIGHT	18.05m
CLOSED LENGTH	5.01m
CLOSED HEIGHT	1.99m
CLOSED WIDTH	1.48m
HORIZONTAL REACH	9.70m
WIDTH MAX WORKING	2.93m
WIDTH MIN WORKING	2.93m
SAFE WORKING LOAD	230kg
WEIGHT	2,800kg
CAGE DIMENSIONS	1.34x0.69x1.10m
GRADEABILITY	28%
CAGE ROTATION	89° (+0°/-89°)
IPAF CATEGORY	1b
SLEW	360°
UP AND OVER CLEARANCE	8.20m
MINIMUM SETUP AREA	2.93mx5.00m
TRACK SURFACE AREA	1.46x0.20m
DRIVE SPEED	1.3km/h
MAXIMUM SETUP INCLINE	16°
NO. OUTRIGGER POSITIONS	1 fixed
POWER	ELECTRIC
FEATURED MODEL	HINOWA 2010 LITHIUM

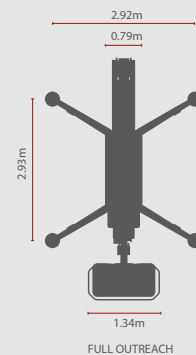


The Hinowa Lightlift 2010 Lithium spider boom provides a working height of up to 20.1m and a maximum horizontal outreach of 9.7m. Its exceptional lift capacity of up to 230kg can accommodate two people with tools, further increasing productivity. Available with a diesel engine combined with a mains electric power of 110 or 220V, or with a lithium battery for pollution-free operation.

The information provided is for guidance only. It may change at any time in accordance with manufacturer's specification. Variable jacking will envelope. Outreach is variable depending on load, angle of rotation and outrigger configuration.



Above profile



Side profile

