



20m Diesel/Mains Spider Lift

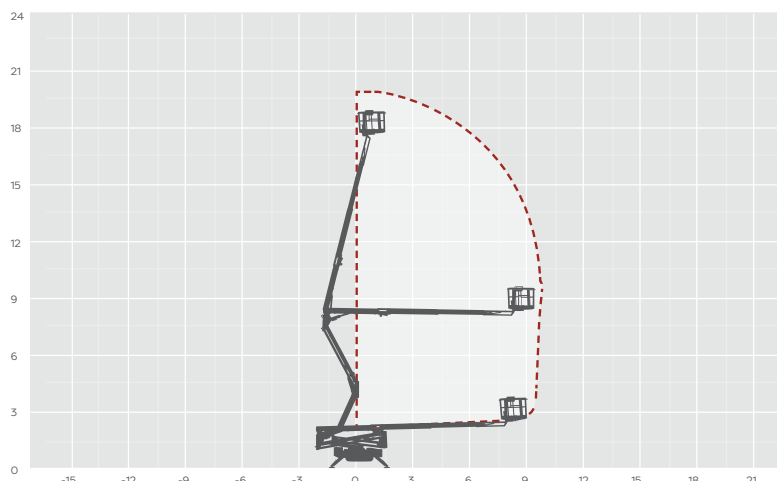
MACHINE SPECIFICATION SHEET

TR20

REACH HEIGHT	20.05m
PLATFORM HEIGHT	18.05m
CLOSED LENGTH	5.00m
CLOSED HEIGHT	1.99m
CLOSED WIDTH	1.48m
HORIZONTAL REACH	9.85m
WIDTH MAX WORKING	2.93m
WIDTH MIN WORKING	2.93m
SAFE WORKING LOAD	230kg
WEIGHT	2,840kg
CAGE DIMENSIONS	1.34x0.69x1.10m
GRADEABILITY	28%
CAGE ROTATION	89° (+0°/-89°)
IPAF CATEGORY	1b
SLEW	360°
UP AND OVER CLEARANCE	8.20m
MINIMUM SETUP AREA	2.93mx5.00m
TRACK SURFACE AREA	1.46x0.20m
DRIVE SPEED	1.3km/h
MAXIMUM SETUP INCLINE	16°
NO. OUTRIGGER POSITIONS	1 fixed
POWER	DIESEL/ MAINS
FEATURED MODEL	JLG X20J

FLOOR LOADINGS

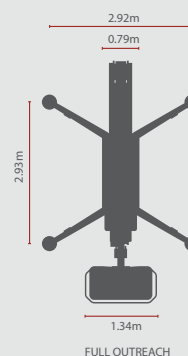
MAX. LOAD PER OUTRIGGER	3.10 kg/cm ²
MAX. LOAD PER SURFACE PRESSURE	N/A
MAX. GROUND PRESSURE WITH STANDARD OUTRIGGER PADS	3.10kg/cm ²
FEATURED MODEL	JLG X20J



The JLG X20J spider lift for hire has a reach height of 20.05m and a horizontal reach of 9.85m. Specialist design with near square outrigger pattern, removable basket and equipped with a crawler carriage allowing it to climb grades up to 28%. The 230kg basket capacity has no working envelope restrictions, increasing productivity for the user. Compact and lightweight with low ground bearing pressures make the JLG X20J allow for access to areas other powered access machines may not allow. Available to hire either as a self-drive option, or with one of our experienced operators.

The information provided is for guidance only. It may change at any time in accordance with manufacturer's specification. Variable jacking will envelope. Outreach is variable depending on load, angle of rotation and outrigger configuration.

Above profile



Side profile

