



21m Under Bridge Unit

MACHINE SPECIFICATION SHEET

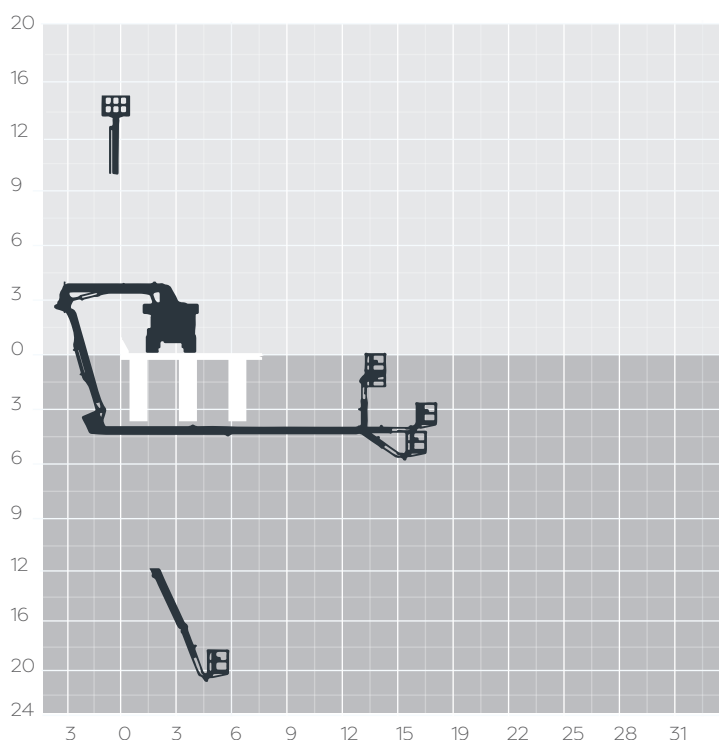
ASPEN A-62 - Basket option

WORKING VERTICAL REACH	-20.6m
HORIZONTAL UNDERBRIDGE REACH	18.80m
SAFE WORKING LOAD	272kg
BASKET ROTATION	180°
WORKING WIDTH	2.50m
LENGTH	12.20m
STOWED WIDTH	2.50m
HEIGHT STOWED	4.00m
PLATFORM SIZE	1.01m x 1.52m
WALKWAY OPTION*	13.4m
WALKWAY CAPACITY	680kg
WEIGHT	32,000kg
FEATURED MODEL	VERSALIFT ASPEN A-62

facelift
access and safety made easy

This multifunctional unit is capable of manoeuvring around bridges in a way that is unlike any other machine. The ASPEN A-62 is equipped with some of the latest technical advances. It has an underbridge horizontal reach of 18.8m and can reach as low as 20.6m. The Aspen A-62 requires no outriggers when operating and is equipped with unique features such as a telescoping 4th boom and a 180 degree rotating platform. These features enable operators to easily get into tight areas behind deep beams. It has a regular work basket with a capacity of 272kg, or a unique option to change the basket to a gantry platform for up to 5 operatives for maximum flexibility and a larger safe working load of 680kg.

The information provided is for guidance only. It may change at any time in accordance with manufacturer's specification.



*Gantry option

