

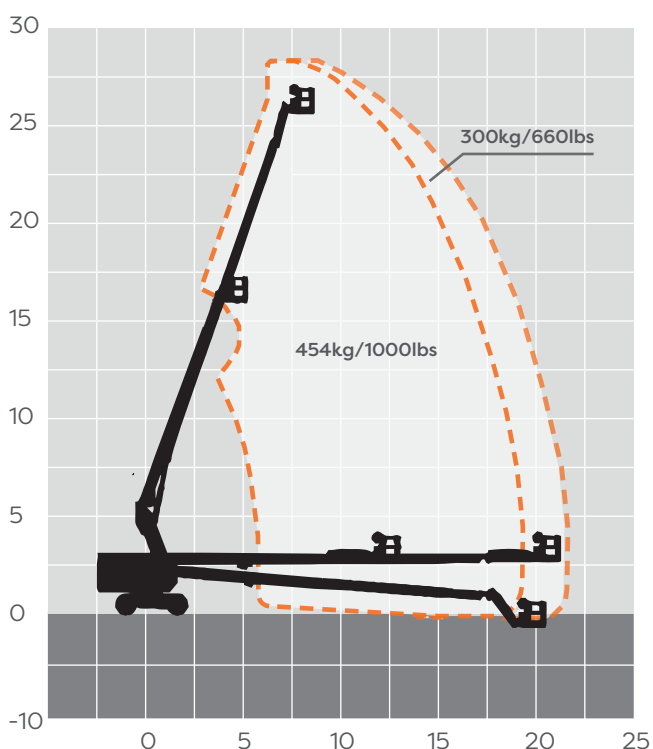


29m Electric Telescopic Boom (Lithium)

MACHINE SPECIFICATION SHEET

BS94ESLI

REACH HEIGHT	28.70m
PLATFORM HEIGHT	26.70m
CLOSED LENGTH	11.91m
CLOSED HEIGHT	2.82m
WIDTH	2.49m
TURNING RADIUS	6.16m
LIFTING CAPACITY	454kg
WEIGHT	17,600kg
ROTATION	360°
HORIZONTAL REACH	22.10m
CAGE DIMENSIONS	0.91x2.44m
IPAF CATEGORY	3b
POWER	ELECTRIC (LITHIUM)
FEATURED MODEL	ZOOMLION ZT26JE



These machines offer the following range of benefits:

- Customized lithium-ion battery features green, environmental protection, low noise, and zero-emission, ideal for construction and plant maintenance.
- Lithium-ion batteries combined with an excellent energy management system provide longer running time.
- Low-temperature regenerative current control and power self-adaptive control effectively improve the safety of Li-ion batteries and greatly prolong the battery's service life by at least 10%.
- Variety of standard charging plugs and 10A/16A/32A multi-power optional charging mode featuring strong charging adaptability.
- Brand-new appearance with lightweight GFRP composite material hood and integrally formed coating feature anti-corrosion, heat preservation, aging resistance and easy cleaning.

The information provided is for guidance only. It may change at any time in accordance with manufacturer's specification.