

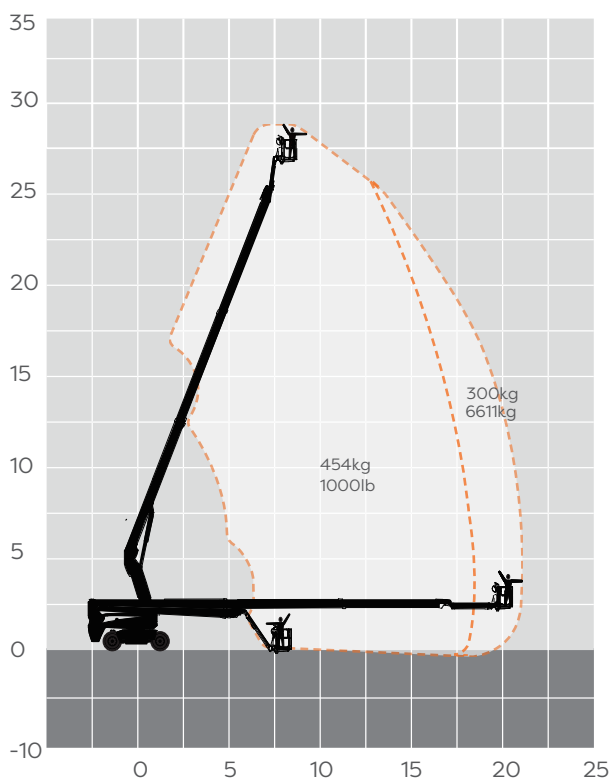


30m Diesel Boom Lift

MACHINE SPECIFICATION SHEET

BS92DS

REACH HEIGHT	30.20m
PLATFORM HEIGHT	28.20m
CLOSED LENGTH	12.08m
CLOSED HEIGHT	2.96m
WIDTH	2.50m
TURNING RADIUS	3.22m
LIFTING CAPACITY	454kg
WEIGHT	18,900kg
ROTATION	360° Continuous
HORIZONTAL REACH	23.00m
CAGE DIMENSIONS	2.44m x 0.91m
IPAF CATEGORY	3b
POWER	DIESEL
FEATURED MODEL	DINGLI BT30RT



These machines offer the following range of benefits:

- Reaches up to 30.20 meters (99 ft 1 in), ideal for high-elevation tasks.
- Offers a horizontal outreach of 23 meters (75 ft 6 in), allowing access to hard-to-reach areas.
- Supports up to 454 kg (1000 lbs) on the platform, accommodating multiple workers and tools
- Equipped with axle integrated four-wheel drive system for greater rough-terrainability.
- Features a 55.4 kW Deutz diesel engine, ensuring reliable performance in demanding environments.
- Low center of gravity and component-downward design enhance stability and safety during operation.

The information provided is for guidance only. It may change at any time in accordance with manufacturer's specification.