

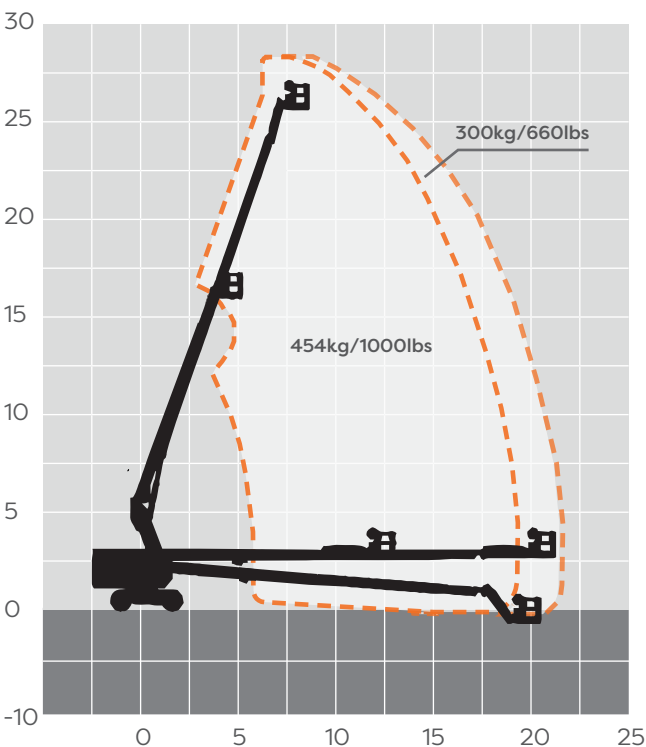


# 29m Electric Telescopic Boom (Lithium)

## MACHINE SPECIFICATION SHEET

### BS86ESLI

REACH HEIGHT	28.70m
PLATFORM HEIGHT	26.70m
CLOSED LENGTH	11.91m
CLOSED HEIGHT	2.82m
WIDTH	2.49m
TURNING RADIUS	6.16m
LIFTING CAPACITY	454kg
WEIGHT	17,600kg
ROTATION	360°
HORIZONTAL REACH	22.10m
CAGE DIMENSIONS	0.91x2.44m
IPAF CATEGORY	3b
POWER	ELECTRIC (LITHIUM)
FEATURED MODEL	ZOOMLION ZT26JE



These machines offer the following range of benefits:

- Customized lithium-ion battery features green, environmental protection, low noise, and zero-emission, ideal for construction and plant maintenance.
- Lithium-ion batteries combined with an excellent energy management system provide longer running time.
- Low-temperature regenerative current control and power self-adaptive control effectively improve the safety of Li-ion batteries and greatly prolong the battery's service life by at least 10%.
- Variety of standard charging plugs and 10A/16A/32A multi-power optional charging mode featuring strong charging adaptability.
- Brand-new appearance with lightweight GFRP composite material hood and integrally formed coating feature anti-corrosion, heat preservation, aging resistance and easy cleaning.

The information provided is for guidance only. It may change at any time in accordance with manufacturer's specification.