



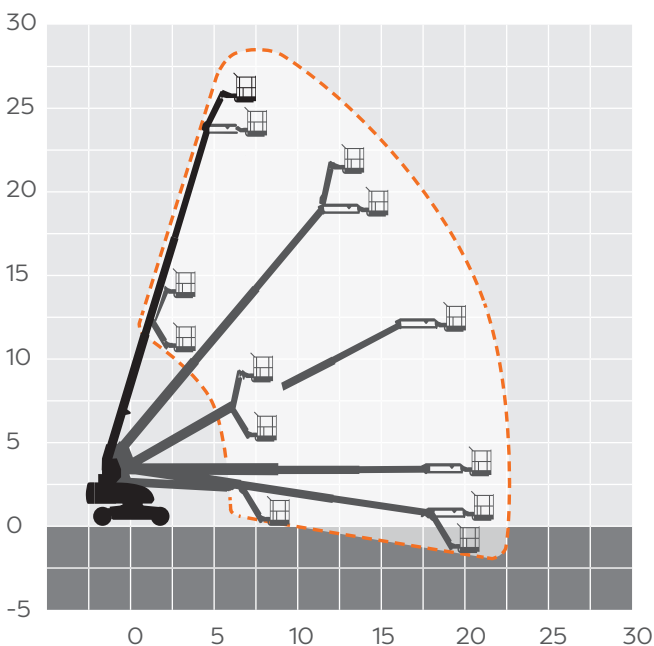
# 28m Diesel Telescopic Boom

## MACHINE SPECIFICATION SHEET

### BS86DS

REACH HEIGHT	28.21m
PLATFORM HEIGHT	26.21m
CLOSED LENGTH	12.19m
CLOSED HEIGHT	3.05m
TRANSPORT WIDTH	2.49m
TURNING RADIUS	6.86m
LIFTING CAPACITY	230kg
WEIGHT	17,200kg
ROTATION	360°
HORIZONTAL REACH	22.86m
CAGE DIMENSIONS	0.91x2.44m
IPAF CATEGORY	3b
POWER	DIESEL

FEATURED MODEL	JLG 860SJS
ALTERNATIVE MODEL	JLG 860SJ* GENIE GS85*



The JLG 860SJ offers the following range of benefits:

- The jib boom offers precise platform positioning, ideal for work areas that may be confined or difficult to access
- 4x4 offers strong traction where ground conditions are challenging
- Suitable for a variety of applications - construction, maintenance, or industrial for routine maintenance and smoother machine functions
- Up to 22.86m horizontal outreach and dual-rated platform capacities up to 1,000 lb (454kg)

The information provided is for guidance only. It may change at any time in accordance with manufacturer's specification.

\*Model not fitted with electronic secondary guarding.