

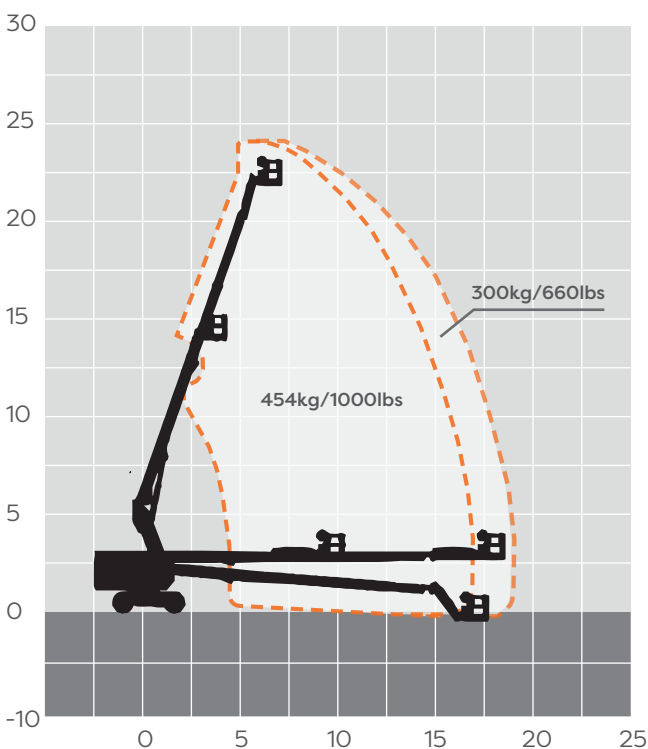


24m Electric Telescopic Boom (Lithium)

MACHINE SPECIFICATION SHEET

BS73ESLI

REACH HEIGHT	24.40m
PLATFORM HEIGHT	22.40m
CLOSED LENGTH	10.30m
CLOSED HEIGHT	2.76m
WIDTH	2.49m
TURNING RADIUS	5.58m
LIFTING CAPACITY	454kg
WEIGHT	13,200kg
ROTATION	360°
HORIZONTAL REACH	17.09m
CAGE DIMENSIONS	0.91x2.44m
IPAF CATEGORY	3b
POWER	ELECTRIC (LITHIUM)
FEATURED MODEL	ZOOMLION ZT22JE



These machines offer the following range of benefits:

- Customized lithium-ion battery features green, environmental protection, low noise, and zero-emission, ideal for construction and plant maintenance.
- Lithium-ion batteries combined with an excellent energy management system provide longer running time.
- Low-temperature regenerative current control and power self-adaptive control effectively improve the safety of Li-ion batteries and greatly prolong the battery's service life by at least 10%.
- Variety of standard charging plugs and 10A/16A/32A multi-power optional charging mode featuring strong charging adaptability.
- Brand-new appearance with lightweight GFRP composite material hood and integrally formed coating feature anti-corrosion, heat preservation, aging resistance and easy cleaning.

The information provided is for guidance only. It may change at any time in accordance with manufacturer's specification.