



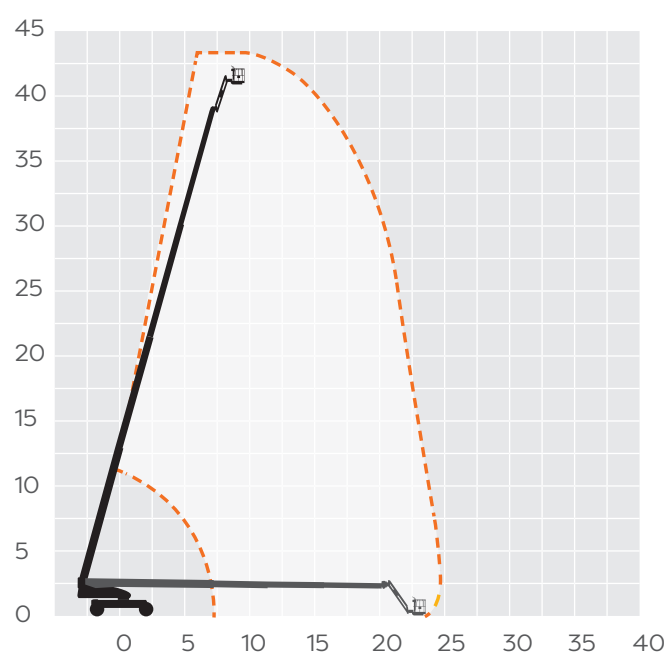
43m Diesel Telescopic Boom

MACHINE SPECIFICATION SHEET

BS135DS

REACH HEIGHT	43.30m
PLATFORM HEIGHT	41.30m
CLOSED LENGTH	14.89m
CLOSED HEIGHT	3.05m
WHEELBASE	3.81m
WIDTH	2.49m [†] /3.81m ^{††}
TURNING RADIUS	5.89m ^{††}
LIFTING CAPACITY	230kg
WEIGHT	20,400kg
ROTATION	360°
HORIZONTAL REACH	24.38m
CAGE DIMENSIONS	0.91x2.44m
IPAF CATEGORY	3b
POWER	DIESEL

FEATURED MODEL	JLG 1350SJPS
----------------	--------------



The JLG 1350SJPS offers the following range of benefits:

- Perfect for heavy lifting in construction, bridge inspections and maintenance, stadium and sports arena, oil and gas, industrial, telecommunications and utility applications
- High gradeability for improved go-anywhere mobility around jobsites
- High load capacity from operators and materials

The information provided is for guidance only. It may change at any time in accordance with manufacturer's specification.

†Axles Retracted ††Axles Extended.