



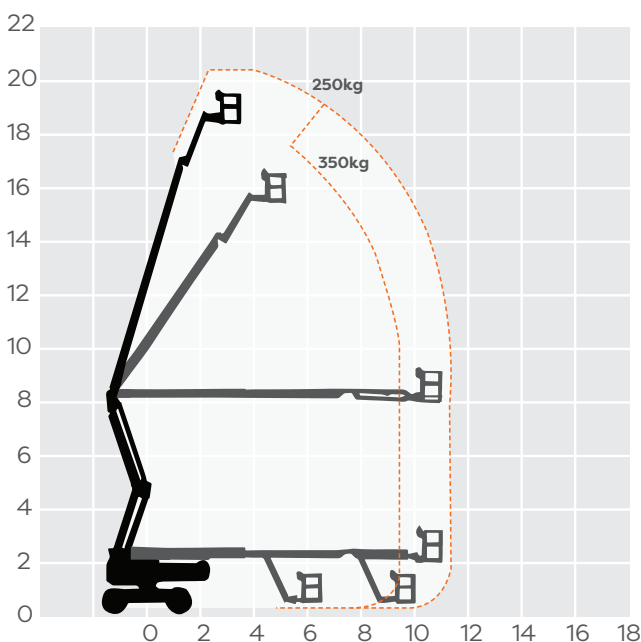
21m Electric Articulated Boom

MACHINE SPECIFICATION SHEET

BA62ES

REACH HEIGHT	20.67m
PLATFORM HEIGHT	18.67m
CLOSED LENGTH	8.45m
CLOSED HEIGHT	2.40m
CLOSE WIDTH	2.41m
TURNING RADIUS	4.50m
LIFTING CAPACITY	250kg
WEIGHT	9,375kg
ROTATION	355°
HORIZONTAL REACH	11.91m
CAGE DIMENSIONS	0.80x1.83m
IPAF CATEGORY	3b
POWER	ELECTRIC

FEATURED MODEL **HAULOTTE HA20 LE**



The Haulotte HA20 LE offers the following range of benefits:

- The articulating jib booms offer precise platform positioning, ideal for work areas that may be confined or difficult to access
- Offering outreach and up-and-over clearance they offer a flexible solution for many applications
- 4x4 offers strong traction where ground conditions are challenging
- Suitable for a variety of applications - construction, maintenance, or industrial

The information provided is for guidance only. It may change at any time in accordance with manufacturer's specification.